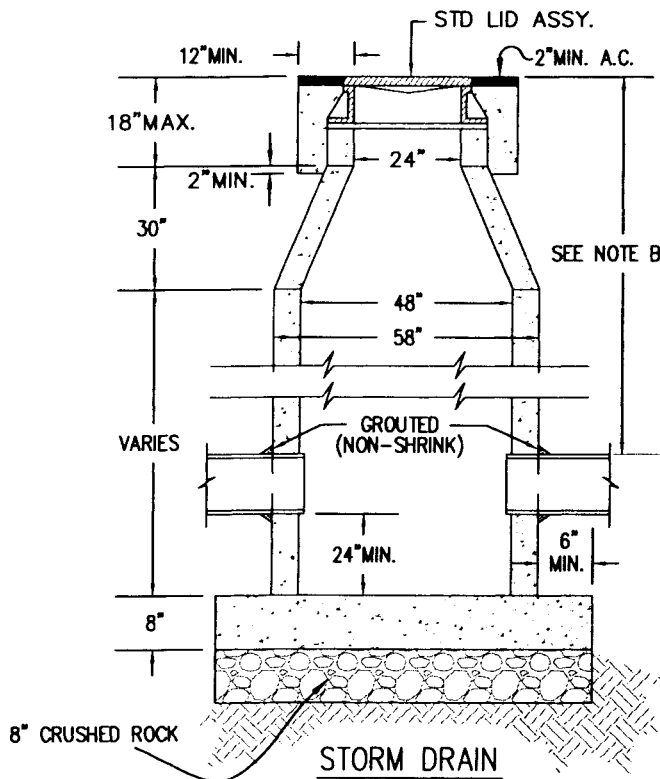


SHALLOW MANHOLE DETAIL
(FOR PIPES WITH LESS THAN 4' COVER)



NOTES:

- A. PRIOR TO BACKFILLING, THE CONTRACTOR SHALL VACUUM TEST ALL MANHOLES TO ENSURE NO LEAKAGE WILL OCCUR. FOR REQUIREMENTS SEE CITY SPECIAL PROVISIONS.
- B. FOR PIPES WITH LESS THAN 4' COVER USE THE SHALLOW MANHOLE DETAIL.
- C. THE CITY MAY REQUIRE THE CONTRACTOR TO HYDROFLUSH THE STORM DRAIN LINES IF ANY CONSTRUCTION DEBRIS IS FOUND IN THE LINES.
- D. SEE DETAIL TR5 FOR BEDDING & BACKFILL REQUIREMENTS.

STORM DRAIN MANHOLE
(FOR PIPES LESS THAN 30"Ø)

CITY OF YUBA CITY

STANDARD DETAIL

DR1

[Signature] 7/21/09
APPROVED DATE

DATE	REVISIONS	BY